

Building User Interfaces

Dialogflow 2

Intermediate Concepts

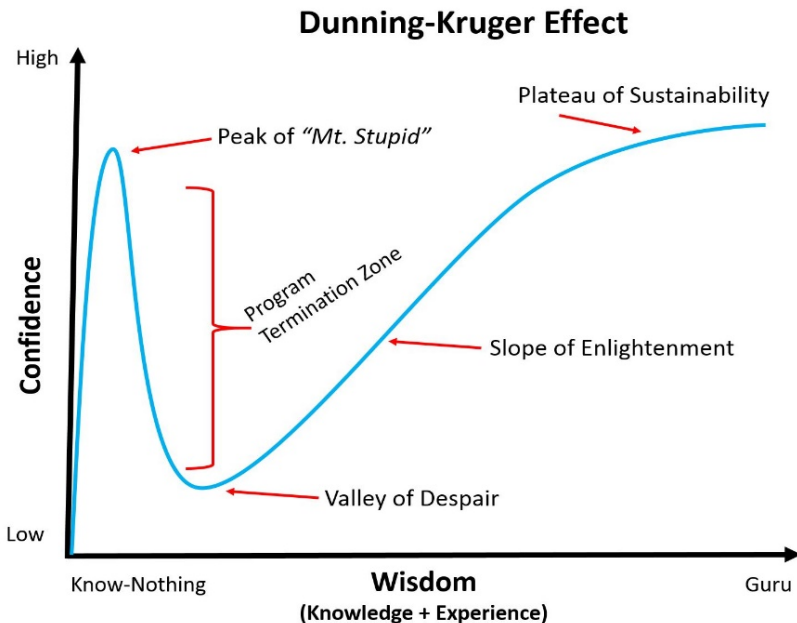
Professor Bilge Mutlu

Announcements

- >> All assignments are due on December 13
- >> We will offer clinic hours until December 13
- >> Final exam is December 18, alternative date is December 13
- >> Tuesday will be a short lecture, followed by a review session
- >> Grading update: grading underway; grades look good

A bit of a pep talk¹

- » Why am I feeling terrible?
- » That means you are on the path to enlightenment!



¹Kruger & Dunning, 1999, Unskilled and Unaware of It...

Accomplishments

- » You now know the basics of UX design *and* UX development.
 - » Very few CS or design students can say this.
 - » You have a clear path to knowing and learning more.
- » You know some cutting-edge stuff.
 - » React is now industry standard.
 - » No one knows how to build voice assistants.
- » You have done enough work for a design portfolio.

Search My Courses Scheduler

Show Expanded View

COMP SCI 639 - Building User Interfaces
Credits: 3 - Level: Advanced
See Sections 91%

BIOLOGY 101 - Animal Biology
Credits: 3 - Level: Elementary
General biological principles. Topics include evolution, ecology, animal behavior, cell structure and function, genetics and molecular genetics and the physiology of a variety of organ systems emphasizing function in humans. Email lists. Not recommended for students with credit already in Zoology/Biology/Botany 151 or 152
See Sections 86%

COMP SCI 252 - Introduction To Computer Engineering
Credits: 2 - Level: Elementary
Logic components built with transistors, rudimentary Boolean algebra, basic combinational logic design, basic synchronous sequential logic design, basic computer organization and design, introductory machine- and assembly-language programming
See Sections 75%

COMP SCI 240 - Introduction To Discrete Mathematics
Credits: 3 - Level: Intermediate
Basic concepts of logic, sets, partial order and other relations, and functions; basic concepts of mathematics (definitions, proofs, sets, functions, and relations) with a focus on discrete structures: integers, bits, strings, trees, and graphs. Propositional logic, Boolean algebra, and predicate logic. Mathematical induction and recursion, invariants and algorithmic correctness, recurrence and asymptotic growth analysis. Fundamentals of counting
See Sections 89%

PSYCH 202 - Introduction To Psychology
Credits: 3 - Level: Elementary
Behavior, including its development, motivation, frustrations, emotion, intelligence, learning, forgetting, personality, language, thinking, and social behavior.
See Sections 79%

Search filters:
 Select Name
 Subject: All
 Credits: minimum to maximum
 Keywords: Add Keyword AND OR
 Sort by recommender
 Configure Recommender

10:35

Profile

FF Fred Fitns

Signup

Username

Password

50 Cal Daily Calories

0g Daily Carbohydrates

0g Daily Protein

0g Daily Fat

0 minutes Daily Activity

Sign Out

WiscShop Cart

Plushes

logo embroidered pillow badger keychain

Bucky Badger Keychain
\$12

Messages

Welcome to WiscShop. How can I help you?

Oh, I can't see the plushies.

Sure. Navigating to plushies

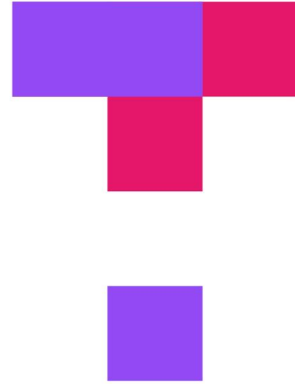
Can you add the "Keychain filter"?

Yes. Here are all plushies tagged as keychain

What we will learn today?

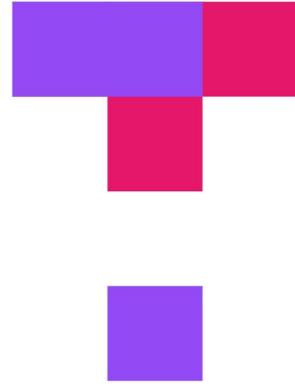
- >> Introduction to Dialogflow, Recap
- >> Dialogflow Building Blocks, Part 2
- >> Fulfillment
- >> Assignment Q&A
- >> Course Evaluations

TopHat Attendance



TOP HAT

TopHat Questions



TOP HAT

Introduction to Dialogflow, Recap

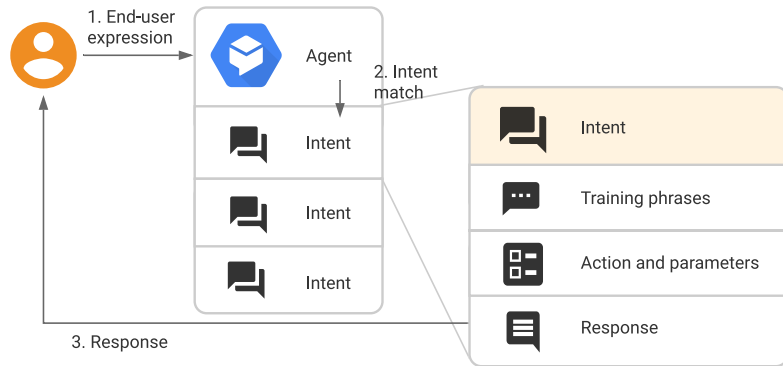
What is Dialogflow?

Dialogflow is an end-to-end, build-once deploy-everywhere development suite for conversational interfaces for websites, mobile applications, and IoT devices (e.g., smart speakers).

How does Dialogflow work?²

The process within Dialogflow involves:

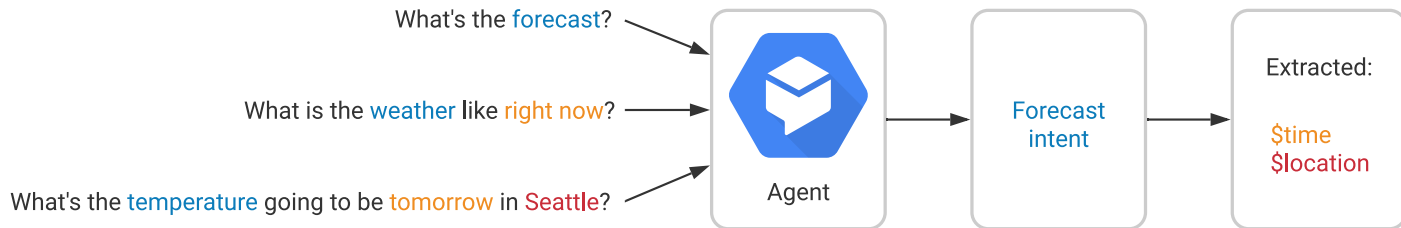
1. User expression
2. Intent matching
3. System response



²[Image source](#)

What is an *agent*?³

Definition: A Dialogflow agent is a virtual agent that handles conversations with users (similar to a human call agent).



³[Image source](#)

Agents are high-level containers for a number of building blocks:

>> Agent settings

>> Intents

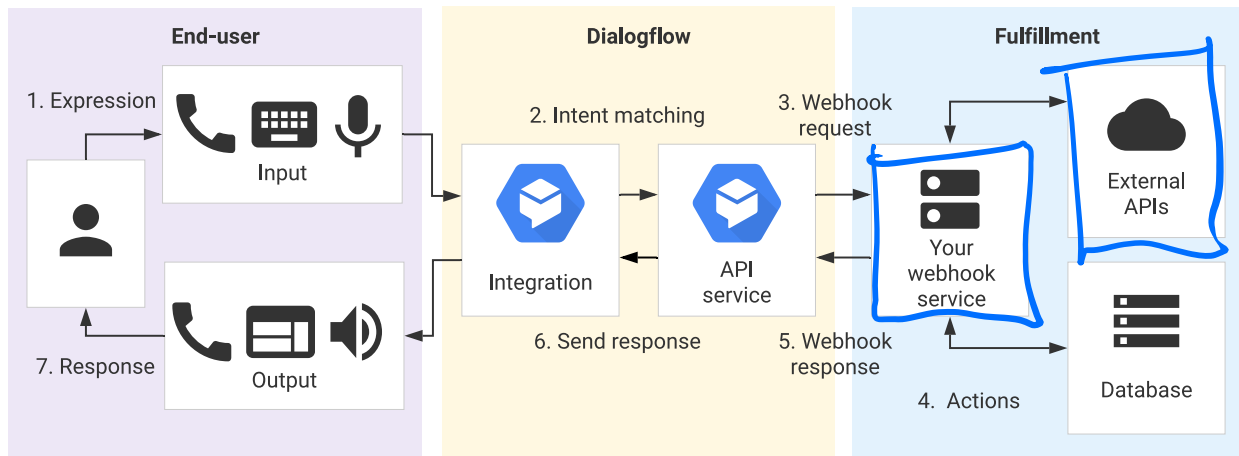
>> Entities

>> Knowledge

>> Integrations

>> Fulfillment 

The End-to-end Dialogflow Workflow⁴



⁴ [Image source](#)

Dialogflow Building Blocks, Part 2

Contexts

What are *contexts*?

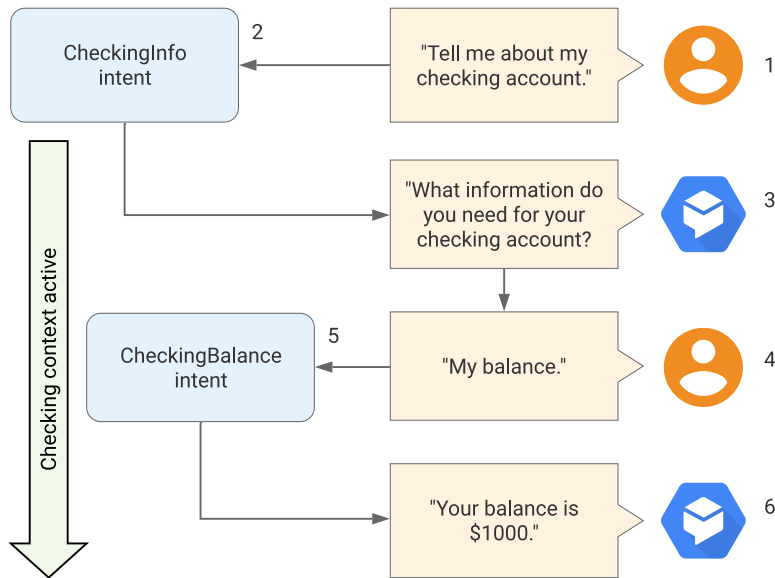
Definition: Context is the common ground that communicators have about the conversation that allows them to infer ambiguous speech, such as "pass me that." what is "that"?

In Dialogflow, contexts provide the agent with common ground on the *intent* and respond to ambiguous speech.

Contexts allow us to control the order of intent matching and define different behaviors for intents with the same training phrases.

Let's Look at An Example⁵

A checking context is defined for the CheckingInfo intent and is active, so that the agent is more likely to recognize the CheckingBalance intent.



⁵[Image source](#)

Defining Contexts

Contexts for intents are defined as *input context* and *output context*.

Context Example

A: Welcome to WiscShop!

U: Hello!

A: What are you looking for?

U: Hats.

Agent activates the looking-for-hats output context.

A: Great. How can I help?

U: Show me what's on sale.

Agent matches ShowSaleItems, input context looking-for-hats.

Input Context

Input context are added to intents, and they increase the likelihood of an intent being matched when the context is active.

Output Context

Output contexts are added to intents, and, when they are added, they are activated or renewed.

Multiple output contexts can be applied to an intent for finer intent matching.

The lifespan of an output context determines how long the context will be active for.

Context Lifespan

Contexts are designed to expire after some time.

- >> By default, they expire after 5 requests or 20 minutes once they are activated.
- >> The lifespan can be specified in terms of number of turns.



can override

more on these later

Follow-up Intents

Follow-up intents are children to parent intents and automatically set to inherit the context from the parent intent.

Intent name	Training phrase	Input context	Output context	Intent response
Appointment	Hello		appointment-followup	Would you like to make an appointment?
↳ Appointment - yes	Yes	appointment-followup	appointment-yes-followup	Would you like a haircut?
↳↳ Haircut - yes	Yes	appointment-yes-followup		Your appointment is set.
↳↳ Haircut - yes	No	appointment-yes-followup		Goodbye.
↳ Appointment - no	No	appointment-followup		Goodbye.

Events

What Are Events?

Definition: Events trigger intents based on external events rather than user queries.

We can use *platform events* or create our *custom events*.

Platform Events

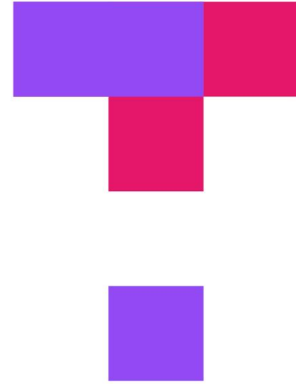
Definition: Events that are triggered by actions users take on platforms that Dialogflow interacts with, such as Google Assistant, Slack, and Facebook Messenger.

Platform	Event	Description
Multiple	WELCOME	Generic welcome event for any platform.
Actions on Google	GOOGLE_ASSISTANT_WELCOME	Triggered when the user starts a conversation with your action.
Slack	SLACK_WELCOME	Triggered when the user starts a conversation with your Slack bot.
Facebook	FACEBOOK_WELCOME	Triggered when the user starts a conversation with your Facebook Messenger bot.

Custom Events

Definition: Events defined for communication that cannot be captured through text or voice, such as button clicks, authorization, or timeouts.

TopHat Quiz



TOP HAT

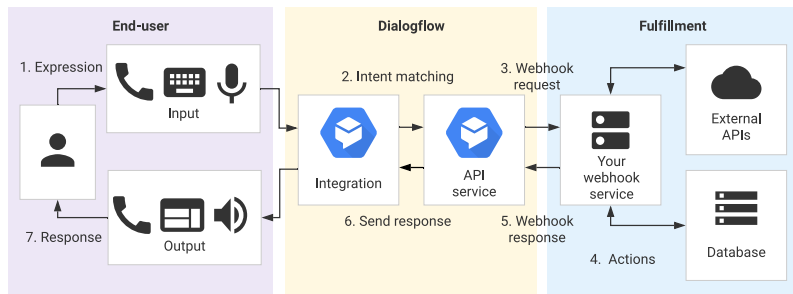
Fulfillment

What Is Fulfillment?⁶

Definition: Fulfillment allows the integration of Dialogflow agents with web services.

Intents are *enabled* for fulfillment.

Once enabled, intents will communicate with external APIs using a *webhook*.



⁶ [Image source](#)

What Is A Webhook?

Definition: A *webhook* is a web server endpoint that allows applications to interact with the server API.

Webhooks in Dialogflow

Dialogflow fulfillment will follow the following course of action:

1. When an intent is enabled for fulfillment, it will make an HTTP POST request to the associated webhook with a JSON object about the matched event.
2. The webhook is designed to respond to your request appropriately, e.g., by looking up information in a database.
3. The webhook responds back with instructions for what Dialogflow should do next.

Standard POST request format:

```
POST https://my-service.com/action
```

Headers:

```
//user defined headers
```

```
Content-type: application/json
```

```
POST body: {
```

```
  // JSON
```

```
}
```

You have to design your server to be able to process the JSON that's passed by the `POST` and to respond in a way that Dialogflow can process.

In the assignment, we did this for you — we are using a webhook and external code to connect your agent with our server.

If you are using Dialogflow to connect with Google services (more common, preferred by Dialogflow), you can use the Inline Editor. (Our webhook works like the Dialogflow Inline Editor.)

We will cover some of the basics now.

Dialogflow Fulfillment

Process for creating a custom fulfillment:

1. Enable fulfillment for the intent
2. Go to the Inline Editor and locate where the request is made
3. Define a function for your intent
4. Connect the intent to the function
5. Deploy

Step 1. Enable fulfillment for the intent

Standard procedure

Inline Editor (Powered by Cloud Functions for Firebase) ENABLED

Build and manage fulfillment directly in Dialogflow via Cloud Functions for Firebase. [Docs](#)

index.js package.json 

```
10
11 exports.dialogflowFirebaseFulfillment = functions.https.onRequest((request, response) => {
12   const agent = new WebhookClient({ request, response });
13   console.log('Dialogflow Request headers: ' + JSON.stringify(request.headers));
14   console.log('Dialogflow Request body: ' + JSON.stringify(request.body));
15
16   function welcome(agent) {
17     agent.add('Welcome to my agent!');
18   }
19
20   function fallback(agent) {
21     agent.add('I didn't understand');
22     agent.add('I'm sorry, can you try again?');
23   }
24
```

DEPLOY

Our procedure

Fulfillment 

Enable webhook call for this intent

Enable webhook call for slot filling


Webhook ENABLED

Your web service will receive a POST request from Dialogflow in the form of the response to a user query matched by intents with webhook enabled. Be sure that your web service meets all the [webhook requirements](#) specific to the API version enabled in this agent.

URL*

BASIC AUTH

HEADERS

 Add header

SMALL TALK Disable webhook for Smalltalk

above

Step 2. Locate where the request is made

Standard procedure

Inline Editor (Powered by Cloud Functions for Firebase)

ENABLED

Build and manage fulfillment directly in Dialogflow via Cloud Functions for Firebase. [Docs](#)

```
index.js package.json 
```

```
10
11 exports.dialogflowFirebaseFulfillment = functions.https.onRequest((request, response) => {
12   const agent = new WebhookClient({ request, response });
13   console.log('Dialogflow Request headers: ' + JSON.stringify(request.headers));
14   console.log('Dialogflow Request body: ' + JSON.stringify(request.body));
15
16   function welcome(agent) {
17     agent.add(`Welcome to my agent!`);
18   }
19
20   function fallback(agent) {
21     agent.add(`I didn't understand`);
22     agent.add(`I'm sorry, can you try again?`);
23   }
24
```

Our procedure

```
app.post('/', express.json(), (req, res) => {
  const agent = new WebhookClient({
    request : req, response: res
  })
  // Do your work here
})
```

Step 3. Define a function for your intent

Define a function for each intent:

```
function welcome() {  
    agent.add('Welcome to our service!')  
}
```

Step 4. Connect the intent to the function

Connect the function and intent through the intent map:

```
let intentMap = new Map()  
intentMap.set('<IntentName>', welcome)
```


Step 5. Deploy

Standard procedure

Inline Editor (Powered by Cloud Functions for Firebase)

ENABLED

Build and manage fulfillment directly in Dialogflow via Cloud Functions for Firebase. [Docs](#)

```
index.js package.json 
```

```
10
11 exports.dialogflowFirebaseFulfillment = functions.https.onRequest((requ
12   const agent = new WebhookClient({ request, response });
13   console.log('Dialogflow Request headers: ' + JSON.stringify(request.h
14   console.log('Dialogflow Request body: ' + JSON.stringify(request.body
15
16   function welcome(agent) {
17     agent.add(`Welcome to my agent!`);
18   }
19
20   function fallback(agent) {
21     agent.add(`I didn't understand`);
22     agent.add(`I'm sorry, can you try again?`);
23   }
24
```

DEPLOY

Our procedure

You don't need to do anything!

Now, let's get to the // Do your work part:

- >> Accessing user input
- >> Accessing user entities
- >> Setting and getting context

Everything is done through your agent object.

How to Access User Input

To get the entire user query:

agent.query

Returns a string with the entire query and `null` if no value.

How to Access User Entities

To get user entities and other information associated with the intent:

agent.parameters

Returns a JS object with key:value pairs and null if no value.

↑
or empty
string

Accessing Specific Parameters

We need to use `$parameter-name` to access a specific parameter.

E.g.:

`agent.parameters.color`

Setting and getting context

To set a new outgoing context:

```
agent.setContext(context) // string or object
```

To get a context:

```
agent.getContext(contextName) // string name of context
```

Returns the context object.

An Example

Imagine you are on the product page on WiscShop:

User: I'd like to buy this t-shirt.

```
intent = purchaseItem; entity = { item: t-shirt, number: null;  
color: null };
```

Agent: *How many do you want?*

User: 3

```
intent = purchaseItem; entity = { item: t-shirt, number: 3; color:  
null }
```

Agent: *What color would you like?*

User: Black

```
intent = purchaseItem; entity = { item: t-shirt, number: 3; color:  
black }
```

What do we do now?

Find which page they are on to find product ID.

```
fetch('URL/application/', <options>) // GET
```

Returns with a page key, e.g., "page": "/username/tshirts/products/14"

Grab 14, use the following three times:

```
fetch('URL/application/products/14', <options>) // POST
```

Formulate your response:

```
agent.add('Ok, I've added ' + agent.parameters.number + ' ' + agent.parameters.item)
```

could use pluralize

Add user response and agent response to the messages.

Imagine that the user wanted to hear reviews first before purchasing, once the product was selected, we would want to set the context to that product so that we don't have to ask again.

```
agent.context.set({  
  'name': 'current-product',  
  'lifespan': 5,  
  'parameters': {  
    'id': 14  
  }  
});
```

*within intent
function in
webhook.js*

```
agent.context.get( 'current-product' );  
{  
  'name': 'current-product',  
  'lifespan': 5,  
  'parameters': {  
    'id': 14  
  }  
}
```

To Learn More

- >> [Dialogflow documentation](#)
- >> Online tutorials: e.g., [Chatbots Life](#)

Assignment Q&A

A Few Notes

>> To query what products there are, you can use:

```
https://mysqlcs639.cs.wisc.edu/products/?  
tags=white,visor&category=hats
```

>> Feel free to look at the WiscShop code to know how it works

Course Evaluations

What Are Course Evaluations for?

- » It helps us make sure that we are doing a good job.
- » The department uses them for long-term curriculum planning.
- » Most importantly, professors read each and every comment to see how the class can be improved.
 - » Especially for new classes, input is directly used for curriculum development.

Course Evaluations

<https://aefis.wisc.edu/>

~~Bribe~~ Incentive: If we get to 75% response rate, I will bring cookies to the final.

What did we learn today?

- >> Introduction to Dialogflow, Recap
- >> Dialogflow Building Blocks, Part 2
- >> Fulfillment
- >> Assignment Q&A
- >> Course Evaluations